



**GENERAL INFORMATION ONLY**

**HC-138 lifting crane capacities**

Refer to Notes page 3

Length	Boom					On Outriggers				On Tires (Static)			
	Radius		Angle Degrees	Boom Point Height <sup>Ⓣ</sup>		Over Rear		Over Side		Over Rear		Over Side	
	Feet	Meters		Feet	Meters	Pounds	Kilograms	Pounds	Kilograms	Pounds	Kilograms	Pounds	Kilograms
140' (42.67 m)	30	9.14	79.0	144' 3"	43.87	42,400*	19,232*	42,400*	19,232*	27,900	12,655	19,700	8,935
	35	10.67	78.8	143' 2"	43.65	40,400*	18,325*	38,700	17,554	22,600	10,251	15,800	7,166
	40	12.19	74.7	141' 11"	43.26	37,600*	17,055*	31,500	14,288	16,800	8,527	12,900	5,851
	50	15.24	70.5	138' 10"	42.30	28,200	12,791	22,400	10,160	13,700	6,214	9,000	4,082
	60	18.29	66.1	134' 10"	41.09	21,600	9,797	16,900	7,665	10,300	4,672	6,400	2,902
	70	21.34	61.5	129' 11"	39.59	17,100	7,756	13,400	6,078	8,000	3,628	4,700	2,131
	80	24.38	56.7	123' 11"	37.76	14,100	6,395	10,700	4,853	6,300	2,857	3,400	1,542
	90	27.43	51.7	116' 8"	35.56	11,700	5,307	8,800	3,991	4,900	2,222	2,400	1,088
	100	30.48	46.2	108' 0"	32.91	9,800	4,445	7,200	3,265	3,900	1,769	1,800	725
	110	33.53	40.3	97' 4"	29.67	8,300	3,764	6,000	2,721	3,000	1,360	1,000	453
	120	36.58	33.4	84' 0"	25.60	7,100	3,220	5,000	2,267	2,300	1,043	—	—
	130	39.62	25.1	66' 2"	20.16	6,100	2,768	4,100	1,859	1,700	771	—	—
140	42.67	12.2	36' 6"	11.12	5,200	2,358	3,400	1,542	1,200	544	—	—	
150' (45.72 m)	35	10.67	77.7	153' 5"	46.77	37,400*	16,984*	37,400	16,964	—	—	—	—
	40	12.19	75.8	152' 3"	46.41	36,600*	16,102*	31,400	14,242	—	—	—	—
	50	15.24	71.8	148' 4"	45.53	28,000	12,700	22,200	10,089	—	—	—	—
	60	18.29	67.7	145' 8"	44.40	21,400	9,706	16,700	7,574	—	—	—	—
	70	21.34	63.6	141' 2"	43.02	16,900	7,665	13,200	5,987	—	—	—	—
	80	24.38	59.2	135' 8"	41.35	13,800	6,304	10,500	4,762	—	—	—	—
	90	27.43	54.6	129' 2"	39.37	11,500	5,218	8,500	3,855	—	—	—	—
	100	30.48	49.8	121' 5"	37.01	9,600	4,354	7,000	3,175	—	—	—	—
	110	33.53	44.8	112' 2"	34.19	8,100	3,674	5,800	2,630	—	—	—	—
	120	36.58	38.8	100' 11"	30.77	6,900	3,129	4,700	2,131	—	—	—	—
	130	39.62	32.3	86' 11"	26.50	5,800	2,630	3,900	1,769	—	—	—	—
	140	42.67	24.2	68' 4"	20.82	5,000	2,267	3,200	1,451	—	—	—	—
150	45.72	11.8	37' 6"	11.44	4,200	1,905	2,500	1,133	—	—	—	—	
160' (48.77 m)	35	10.67	78.5	163' 8"	49.88	32,700*	14,832*	32,700*	14,832*	—	—	—	—
	40	12.19	76.7	162' 7"	49.55	32,200*	14,605*	31,300	14,197	—	—	—	—
	50	15.24	73.0	159' 10"	48.72	27,700*	12,564*	22,100	10,024	—	—	—	—
	60	18.29	69.2	156' 5"	47.68	21,200	9,616	16,600	7,529	—	—	—	—
	70	21.34	65.3	152' 3"	46.40	16,700	7,574	13,000	5,896	—	—	—	—
	80	24.38	61.3	147' 2"	44.87	13,700	6,214	10,300	4,672	—	—	—	—
	90	27.43	57.1	141' 3"	43.05	11,300	5,125	8,400	3,810	—	—	—	—
	100	30.48	52.8	134' 3"	40.91	9,400	4,263	6,800	3,084	—	—	—	—
	110	33.53	48.1	126' 0"	38.40	7,800	3,583	5,600	2,540	—	—	—	—
	120	36.58	43.1	118' 2"	35.41	6,700	3,039	4,600	2,086	—	—	—	—
	130	39.62	37.6	104' 5"	31.82	5,600	2,540	3,700	1,678	—	—	—	—
	140	42.67	31.2	89' 9"	27.37	4,800	2,177	3,000	1,360	—	—	—	—
150	45.72	23.4	70' 5"	21.47	4,000	1,814	2,400	1,088	—	—	—	—	
160	48.77	11.4	38' 7"	11.75	3,400	1,542	1,800	816	—	—	—	—	
170' (51.82 m)	35	10.67	79.2	173' 10"	52.99	28,800*	13,063*	28,800*	13,063*	—	—	—	—
	40	12.19	77.5	172' 10"	52.68	28,300*	12,836*	28,300*	12,836*	—	—	—	—
	50	15.24	74.0	170' 3"	51.90	24,300*	11,022*	21,900	9,933	—	—	—	—
	60	18.29	70.5	167' 1"	50.93	20,500*	9,298*	16,500	7,484	—	—	—	—
	70	21.34	66.9	163' 2"	49.74	16,300*	7,393*	12,800	5,805	—	—	—	—
	80	24.38	63.1	158' 6"	48.31	13,500	6,123	10,200	4,626	—	—	—	—
	90	27.43	59.3	153' 0"	46.64	11,100	5,034	8,200	3,719	—	—	—	—
	100	30.48	55.3	146' 7"	44.68	9,200	4,173	6,600	2,933	—	—	—	—
	110	33.53	51.1	139' 1"	42.40	7,700	3,492	5,400	2,449	—	—	—	—
	120	36.58	46.6	130' 4"	39.73	6,500	2,948	4,400	1,995	—	—	—	—
	130	39.62	41.7	120' 1"	36.59	5,500	2,494	3,500	1,587	—	—	—	—
	140	42.67	36.4	107' 9"	32.84	4,600	2,086	2,800	1,270	—	—	—	—
150	45.72	30.3	92' 6"	28.21	3,800	1,723	2,200	997	—	—	—	—	
160	48.77	22.7	72' 6"	22.09	3,200	1,451	1,600	725	—	—	—	—	
170	51.82	11.1	39' 8"	12.05	2,600	1,179	1,200	544	—	—	—	—	
180' (54.86 m)	40	12.19	78.2	183' 1"	55.79	25,000*	11,339*	25,000*	11,339*	—	—	—	—
	50	15.24	74.9	180' 8"	55.07	21,400*	9,708*	21,400*	9,708*	—	—	—	—
	60	18.29	71.6	177' 8"	54.15	17,900*	8,119*	16,300	7,393	—	—	—	—
	70	21.34	68.2	174' 0"	53.03	14,300*	6,466*	12,600	5,715	—	—	—	—
	80	24.38	64.7	169' 8"	51.71	12,300*	5,579*	10,000	4,535	—	—	—	—
	90	27.43	61.2	164' 6"	50.15	10,500*	4,762*	8,000	3,628	—	—	—	—
	100	30.48	57.5	158' 7"	48.34	9,000	4,082	6,400	2,902	—	—	—	—
	110	33.53	53.6	151' 9"	46.25	7,500	3,401	5,200	2,358	—	—	—	—
	120	36.58	49.5	143' 10"	43.83	6,300	2,857	4,200	1,905	—	—	—	—
	130	39.62	45.2	134' 7"	41.02	5,300	2,404	3,300	1,496	—	—	—	—
	140	42.67	40.5	123' 10"	37.74	4,400	1,995	2,600	1,179	—	—	—	—
	150	45.72	35.3	111' 0"	33.83	3,600	1,632	2,000	907	—	—	—	—
160	48.77	29.4	95' 2"	29.02	3,000	1,360	1,400	635	—	—	—	—	
170	51.82	22.1	74' 5"	22.69	2,400	1,088	1,000	453	—	—	—	—	
180	54.86	10.8	40' 8"	12.34	1,900	861	—	—	—	—	—	—	

Not Applicable

Ⓣ Measured vertically from center of boom head sheave to ground.

(continued)

**GENERAL INFORMATION ONLY**

**HC-138 lifting crane capacities**

Refer to Notes below

Length	Boom					On Outriggers				On Tires (Static)			
	Radius		Angle	Boom Point Height <sup>Ⓞ</sup>		Over Rear		Over Side		Over Rear		Over Side	
	Feet	Meters	Degrees	Feet	Meters	Pounds	Kilograms	Pounds	Kilograms	Pounds	Kilograms	Pounds	Kilograms
190' (57.91 m)	40	12.19	78.0	193' 3"	58.90	22,300*	10,115*	22,300*	10,115*	Not Applicable			
	50	15.24	75.7	191' 0"	58.22	18,800*	8,527*	18,800*	8,527*				
	60	18.29	72.6	188' 2"	57.35	14,700*	6,687*	14,700*	6,687*				
	70	21.34	69.4	184' 9"	56.30	12,600*	5,715*	12,400	5,624				
	80	24.38	66.1	180' 8"	55.06	10,900*	4,898*	9,900	4,445				
	90	27.43	62.8	175' 10"	53.60	9,300*	4,218*	7,800	3,538				
	100	30.48	59.4	170' 4"	51.92	8,000*	3,628*	6,200	2,812				
	110	33.53	55.8	164' 0"	49.98	7,000*	3,175*	5,000	2,267				
	120	36.58	52.1	158' 8"	47.76	6,100*	2,766*	4,000	1,814				
	130	39.62	48.1	148' 4"	45.21	5,000	2,287	3,100	1,406				
	140	42.67	43.9	138' 8"	42.27	4,200	1,905	2,400	1,088				
	150	45.72	39.4	127' 5"	38.86	3,400	1,542	1,800	816				
	160	48.77	34.4	114' 1"	34.78	2,800	1,270	1,200	544				
	170	51.82	28.6	97' 9"	29.81	2,200	987	—	—				
	180	54.86	21.5	76' 4"	23.28	1,700	771	—	—				
	190	57.91	10.5	41' 5"	12.63	1,300	589	—	—				

Ⓞ Measured vertically from center of boom head sheave to ground.

**Notes — lifting crane capacities**

- Capacities included in this chart are maximum allowable, and are based on machine standing level on firm supporting surface under ideal job conditions.
- Capacities are not more than 85% of minimum tipping load.
  - Asterisk (\*) indicates capacities based on factors other than those which would cause a tipping condition.
- Capacities are based on freely suspended loads and make no allowance for such factors as the effect of wind, sudden stopping of loads, supporting surface conditions, inflation of tires, and operating speeds. Operator must reduce load ratings to take such conditions into account. Deduction from rated capacities must be made for weight of hook block, weighted ball/hook, sling, spreader bar, or other suspended gear.
- On tires (static) loads are defined as loads handled without machine travel or with machine travel at creep speeds only.
- Boom point height dimensions based on machine standing on tires.
- Least stable rated condition is over the side.
- 44" x 54" (1.12 x 1.37 m) tubular boom with tapered tip top section — for lifting 67,200# (30,481 kg) with 3/4" (19.05 mm) rope, 4-parts of 3/4" (19.05 mm) Type "N" wire rope are required.
- Boom live mast must be fixed in pinned, extended 23' 0" (7.01 m) length — and boom stops must be in proper working position — for all capacities on this chart.
- When using boom live mast as a short boom, maximum lifting capacity of mast is 18,000# (8,165 kg), with 3-parts of 3/4" (19.05 mm) Type "N" wire rope, from 10' (3.05 m) minimum radius to 23' (7.01 m) maximum radius. Boom live mast must be in pinned, extended 23' 0" (7.01 m) length, mast stops in proper working position, and carrier on outriggers.  
 Note: Use of live mast as short boom is intended for machine assembly or disassembly only. It should not be used for general crane service.
- Use of boom midpoint suspension pendants are required for boom lengths exceeding 140' (42.67 m).
- When swinging rated load from rear to side of carrier, allowance must be made for any deflections which cause load radius to increase.
- Main boom length, without jib, must not exceed 190' (57.91 m).
- Jib cannot be used on main boom longer than 190' (57.91 m), and maximum jib length permitted on 190' (57.91 m) boom is 50' (15.24 m).
- These capacities apply only to the machine as originally manufactured and normally equipped by FMC Corporation, Crane and Excavator Division.

GENERAL INFORMATION ONLY



**HC-138 lifting crane**

**Boom** — tubular; 54" (1.37 m) wide, 44" (1.13 m) deep with 40' (12.19 m) long tapered tip top section, 1 1/4" (31.75 mm) dia. boom pendants, boom live mast, and boom midpoint suspension pendants as required.

**Jib** — tubular; 30" (.76 m) wide, 24" (.61 m) deep.

**Carrier** — FMC; 8 x 4 drive, 236" (5.99 m) wheelbase, 11' 0" (3.35 m) wide.

**Counterweights** — Upper ctwt. "A" — 18,000# (8,165 kg). Bumper ctwt. "A" — 4,300# (1,950 kg). Bumper ctwt. "AB" — 12,300# (8,165 kg) required for boom lengths 170' thru 190' (51.82 thru 57.91 m) when used with jib.

Maximum boom and boom/jib machine can lift off <sup>①</sup> ground unassisted — without load.

Standard machine equipped with ctwts. above and boom live mast.	Over Rear				Over Side			
	Boom		Boom + Jib		Boom		Boom + Jib	
	Feet	Meters	Feet	Meters	Feet	Meters	Feet	Meters
On outriggers — With both upper ctwt. and bumper ctwt. With upper ctwt. and without bumper ctwt.	190	57.91	190 + 50	57.91 + 15.24	180	54.86	150 + 50	45.72 + 15.24
	190	57.91	160 + 50	48.77 + 15.24	170	51.82	140 + 50	42.67 + 15.24
On tires <sup>②</sup> — With both upper ctwt. and bumper ctwt. With upper ctwt. and without bumper ctwt.	160	48.77	130 + 50	39.62 + 15.24	120	36.58	90 + 50	27.43 + 15.24
	130	39.62	110 + 50	33.53 + 15.24	110	33.53	90 + 50	27.43 + 15.24

Maximum boom and boom/jib machine can lift off ground and travel <sup>②</sup> with, with boom horizontal — without load.

Standard machine equipped with ctwts. above and boom live mast.	On Tires Over Rear <sup>②</sup>			
	Boom		Boom + Jib	
	Feet	Meters	Feet	Meters
With both upper ctwt. and bumper ctwt.	150	45.72	130 + 50	39.62 + 15.24
With upper ctwt. and without bumper ctwt.	120	36.58	100 + 50	30.48 + 15.24

<sup>①</sup>Hook blocks on ground and machine standing level on firm supporting surface.

<sup>②</sup>Based on firm, level supporting surface, at speeds up to 5 m.p.h. (8.05 km/hr).

Air pressure in tires to be 100 p.s.i. (7.03 kg/cm<sup>2</sup>).

We are constantly improving our products and therefore reserve the right to change designs and specifications.



GENERAL INFORMATION ONLY



**HC-138 jib capacities** (representative capacities showing maximum boom and jibs permitted).

**Boom** — lubular, 54" (1.37 m) wide, 44" (1.12 m) deep with 40" (12.19 m) long tapered tip top section, 1 1/4" (31.75 mm) dia. boom pendants, boom five mast, and boom midpoint suspension pendants as required.

**Jib** — lubular, 30" (.76 m) wide, 24" (.61 m) deep.

**Carrier** — FMC; 8 x 4 drive, 236" (5.99 m) wheelbase, 11' 0" (3.35 m) wide.

**Counterweights** — Upper cwt. "A" — 18,000# (8,165 kg). Bumper cwt. "AB" — 12,300# (5,578 kg).

Boom Length	0° Offset			15° Offset			30° Offset			
	Jib Length Feet Meters	Load Radius		Boom Angle Degree	Jib Point Height Feet Meters	Jib Capacity Pounds Kilograms	Boom Angle Degree	Jib Point Height Feet Meters	Jib Capacity Pounds Kilograms	
		Feet	Meters							
190' (57.91 m)	40	50	15.24	77.8	223' 2"	14,800*	79.6	222' 4"	12,600*	
		70	21.34	72.4	217' 7"	11,000*	4,990*	74.4	213' 11"	8,717*
		80	24.38	69.7	214' 4"	9,300*	4,218*	71.6	210' 4"	7,300*
		90	27.43	66.9	210' 4"	8,200*	3,720*	68.9	206' 4"	6,100*
		100	30.48	64.1	205' 8"	6,900*	3,130*	66.0	201' 7"	5,200*
		110	33.53	61.2	200' 6"	5,600*	2,540*	63.1	196' 4"	4,500*
	30	120	36.58	58.2	194' 7"	4,500*	2,041*	60.1	190' 4"	3,900*
		130	39.62	55.1	186' 0"	3,600*	1,633*	56.9	183' 6"	3,000*
		140	42.67	51.9	180' 6"	2,800*	1,270*	53.7	179' 6"	2,300*
		150	45.72	48.5	172' 1"	2,100*	953*	50.3	175' 11"	1,769*
		160	48.77	46.7	162' 8"	1,600*	726*	46.7	161' 7"	1,315*
		40	50	15.24	78.3	233' 5"	11,500*	5,216*	75.7	223' 1"
	70		21.34	73.2	228' 2"	10,000*	4,536*	73.1	223' 10"	7,800*
	80		24.38	70.6	224' 1"	8,700*	3,946*	70.4	219' 11"	6,600*
	90		27.43	68.0	221' 1"	7,400*	3,357*	67.7	215' 6"	5,700*
	100		30.48	65.3	216' 8"	6,400*	2,903*	65.0	210' 7"	4,900*
110	33.53		62.5	211' 8"	5,600*	2,540*	62.1	205' 0"	4,200*	
50	120	36.58	59.7	206' 2"	4,900*	2,041*	59.2	198' 10"	3,700*	
	130	39.62	56.8	199' 11"	4,000*	1,633*	56.2	191' 8"	3,200*	
	140	42.67	53.8	192' 11"	3,600*	1,270*	53.0	187' 2"	2,900*	
	150	45.72	50.7	185' 1"	2,800*	988*	50.3	183' 11"	2,400*	
	160	48.77	47.4	176' 5"	2,200*	726*	49.7	179' 2"	1,900*	
	50	50	15.24	76.8	243' 8"	7,700*	3,490*	76.9	233' 7"	5,700*
70		21.34	73.9	238' 10"	6,700*	3,039*	74.4	229' 11"	5,000*	
80		24.38	71.5	235' 8"	6,000*	2,631*	71.9	226' 2"	4,400*	
90		27.43	68.9	232' 0"	5,400*	2,293*	69.3	222' 0"	3,900*	
100		30.48	66.4	227' 11"	4,900*	1,996*	66.7	217' 2"	3,500*	
110		33.53	63.8	223' 2"	4,400*	1,720*	64.0	211' 10"	3,000*	
50	120	36.58	61.1	218' 0"	4,000*	1,508*	61.2	204' 4"	2,700*	
	130	39.62	58.3	212' 1"	3,600*	1,315*	58.4	199' 0"	2,400*	
	140	42.67	55.5	205' 6"	3,200*	1,134*	55.4	191' 6"	2,000*	
	150	45.72	52.8	198' 4"	2,800*	988*	52.3	188' 10"	1,800*	
	160	48.77	49.5	190' 1"	2,400*	726*	49.7	183' 11"	1,600*	
	50	50	15.24	75.8	253' 8"	7,700*	3,490*	75.6	243' 7"	5,700*
70		21.34	72.9	248' 10"	6,700*	3,039*	74.4	238' 10"	5,000*	
80		24.38	70.5	245' 8"	6,000*	2,631*	71.9	235' 8"	4,400*	
90		27.43	68.1	242' 6"	5,400*	2,293*	69.3	232' 0"	3,900*	
100		30.48	65.6	237' 7"	4,900*	1,996*	66.7	227' 11"	3,500*	
110		33.53	63.2	232' 8"	4,400*	1,720*	64.0	222' 0"	3,000*	

① Measured vertically from ground to center of jib peak sheave — machine standing on tires.  
 ② Capacities over side or rear.



GENERAL INFORMATION ONLY

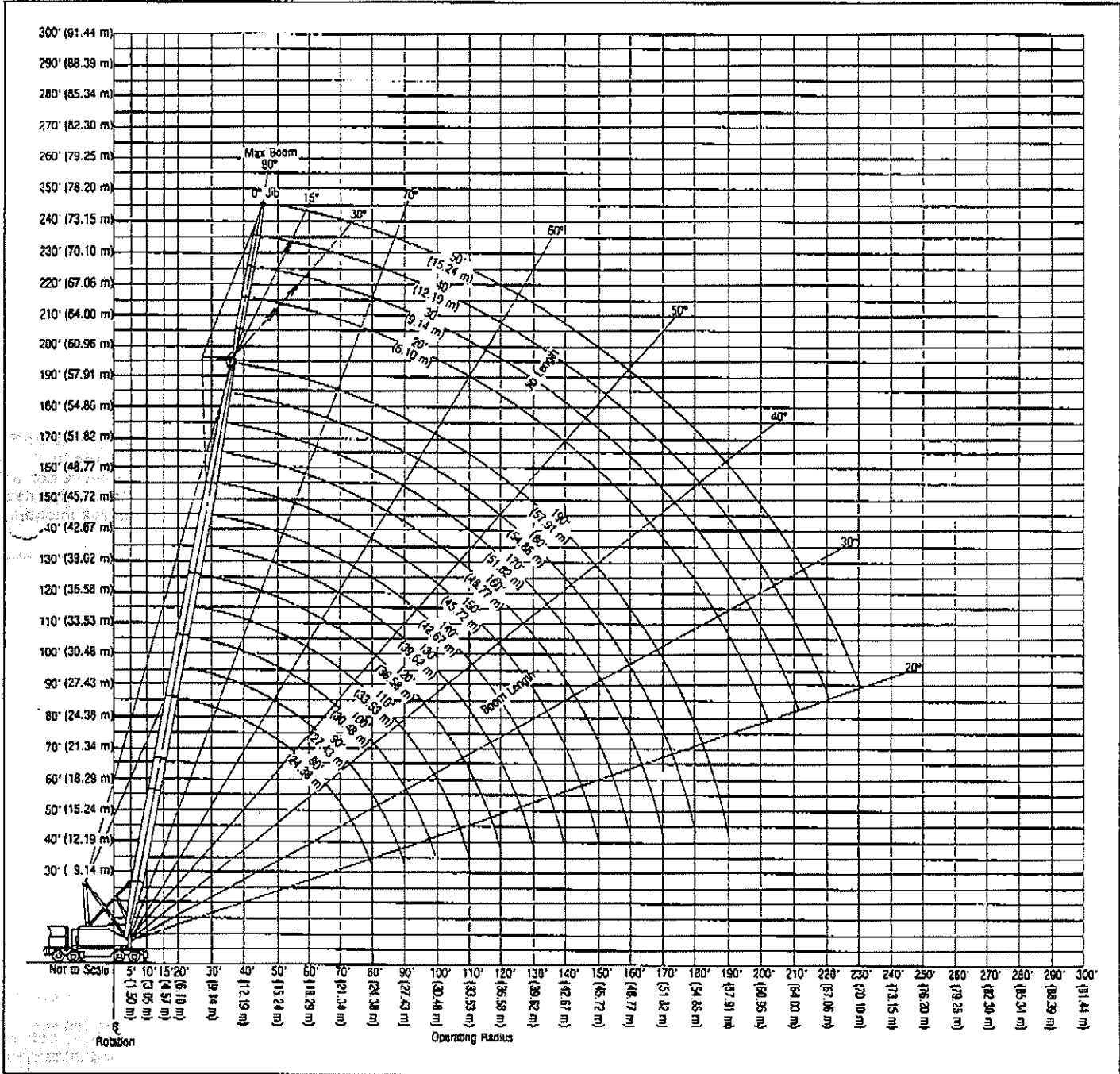
HC-138 boom/jib working ranges

**Boom** — tubular; 54" (1.37 m) wide, 44" (1.12 m) deep with 40' (12.19 m) long tapered top section, 1 1/4" (31.75 mm) dia. boom pendants, boom live mast, and boom midpoint suspension pendants as required.

**Jib** — tubular; 30" (.76 m) wide, 24" (.61 m) deep.

**Carrier** — FMC; 8 x 4 drive, 236" (5.99 m) wheelbase, 11' 0" (3.35 m) wide.

**Counterweights** — Upper cwt. "A" — 18,000# (8,165 kg). Bumper cwt. "A" — 4,300# (1,950 kg). Bumper cwt. "AB" — 12,300# (5,580 kg) required for boom lengths 170' thru 190' (51.82 thru 57.91 m) when used with jib.





# HC-138 CRANE CAPACITIES

CRF 19015-2-73 — TABLE A (continued)

Length	BOOM			ON OUTRIGGERS		ON TIRES (Static only)	
	Radius (Feet)	Angle (Degree)	Point Height "W"	Rear	Side	Rear	Side
160'	35	78.5	183' 7"	38,000	38,000	21,800	15,400
	40	78.7	182' 6"	31,400	31,300	18,000	12,500
	50	73.0	159' 10"	26,500	22,200	12,900	8,600
	60	69.2	156' 5"	21,000	18,700	9,700	6,100
	70	65.3	152' 2"	16,800	13,100	7,400	4,300
	80	61.3	147' 2"	13,500	10,400	5,700	3,100
	90	57.1	141' 2"	11,100	8,500	4,400	2,100
	100	52.8	134' 5"	9,300	6,900	3,400	1,300
	110	48.1	125' 11"	7,800	5,700	2,500	—
	120	43.1	118' 2"	6,600	4,700	1,800	—
	130	37.6	104' 5"	5,600	3,800	1,300	—
	140	31.2	89' 10"	4,700	3,100	—	—
150	23.4	70' 5"	4,000	2,500	—	—	
160	11.4	38' 6"	3,300	1,900	—	—	
170'	35	79.2	173' 9"	31,300	31,300	21,600	15,200
	40	77.5	172' 9"	28,600	28,600	17,800	12,300
	50	74.0	170' 3"	24,100	22,100	12,800	8,400
	60	70.5	167' 1"	20,300	16,600	9,500	5,900
	70	66.8	163' 2"	16,200	12,900	7,200	4,200
	80	63.1	158' 8"	13,300	10,300	5,500	2,900
	90	59.3	153' 0"	11,000	8,300	4,200	1,900
	100	55.3	146' 7"	9,100	6,700	3,200	1,100
	110	51.1	139' 1"	7,700	5,500	2,400	—
	120	46.8	130' 4"	6,500	4,600	1,700	—
	130	41.7	120' 0"	5,400	3,600	1,100	—
	140	36.4	107' 8"	4,600	2,900	—	—
150	30.3	92' 8"	3,800	2,300	—	—	
160	22.7	72' 5"	3,200	1,800	—	—	
170	11.1	39' 6"	2,600	1,300	—	—	
180'	40	78.2	183' 0"	25,300	25,300	17,700	12,200
	50	74.9	180' 8"	21,300	21,300	12,600	8,300
	60	71.6	177' 8"	17,800	16,400	8,300	5,700
	70	68.2	174' 0"	14,200	12,700	7,000	4,000
	80	64.7	169' 7"	12,200	10,100	5,300	2,700
	90	61.2	164' 8"	10,500	8,100	4,000	1,700
	100	57.5	158' 7"	9,000	6,600	3,000	—
	110	53.6	151' 8"	7,500	5,300	2,200	—
	120	49.5	143' 9"	6,300	4,300	1,500	—
	130	45.2	134' 7"	5,300	3,500	—	—
	140	40.5	123' 9"	4,400	2,800	—	—
	150	35.3	111' 0"	3,700	2,100	—	—
160	29.4	95' 2"	3,000	1,600	—	—	
170	22.0	94' 5"	2,500	1,100	—	—	
180	10.8	40' 5"	2,000	1,100	—	—	
190'	40	78.8	193' 4"	22,700	22,700	17,500	12,000
	50	75.7	191' 0"	18,800	18,800	12,400	8,100
	60	72.6	188' 12"	14,700	14,700	9,100	5,600
	70	69.4	184' 8"	12,600	12,600	6,800	3,800
	80	66.1	181' 7"	10,600	9,900	5,200	2,500
	90	62.8	174' 11"	9,100	8,000	3,900	1,500
	100	59.4	170' 4"	8,000	6,400	2,800	—
	110	55.6	164' 0"	7,000	5,200	2,000	—
	120	52.1	156' 8"	6,100	4,200	1,300	—
	130	48.1	148' 4"	5,100	3,300	—	—
	140	43.9	138' 8"	4,200	2,600	—	—
	150	39.4	127' 1"	3,500	2,000	—	—
160	34.4	114' 1"	2,900	1,400	—	—	
170	28.6	97' 6"	2,300	—	—	—	
180	21.5	76' 4"	1,700	—	—	—	
190	10.5	41' 5"	1,200	—	—	—	

COMBINED BOOM & JIB LENGTH			
Length	Radius (Feet)	Angle (Degree)	Point Height "W"
200'	40	79.4	203' 5"
	50	76.5	201' 4"
	60	73.5	198' 7"
	70	70.5	195' 4"
	80	67.4	191' 6"
	90	64.3	187' 0"
	100	61.0	181' 10"
	110	57.7	175' 11"
	120	54.3	169' 2"
	130	50.6	161' 6"
140	46.8	152' 8"	
150	42.8	142' 7"	
160	38.4	130' 11"	
170	33.5	117' 1"	
180	27.9	100' 4"	
190	20.9	79' 2"	

COMBINED BOOM & JIB LENGTH			
Length	Radius (Feet)	Angle (Degree)	Point Height "W"
210'	40	79.9	213' 7"
	50	77.1	211' 6"
	60	74.3	209' 0"
	70	71.4	205' 11"
	80	68.5	202' 4"
	90	65.6	198' 0"
	100	62.5	193' 2"
	110	59.4	187' 7"
	120	56.2	186' 4"
	130	52.8	174' 2"
140	49.3	166' 1"	
150	45.6	157' 0"	
160	41.7	148' 6"	
170	37.4	134' 5"	
180	32.6	120' 1"	
190	27.2	102' 8"	

### NOTES — Lifting Crane Capacities

- Capacities shown are in pounds and, unless indicated by an asterisk (\*), are based on 85% of minimum tipping loads with machine standing level on firm supporting surface. Deduction from capacities must be made for weight of hook block, hook, sling, spreader bar, and other suspended gear.
  - Asterisk indicates capacities based on factors other than those which would cause a tipping condition.
- For lifting 130,000# with 3/4" wire rope, 10-parts of 3/4" dia. Type "N" wire rope are required. Check parts of wire rope required for all capacities.
- Boom live mast must be fixed in extended (23' 0" long) position — with live mast stops in position and operative — for all capacities on this chart.
- When using boom live mast as short boom, maximum lifting capacity of the mast is 18,000# at radii from 10' 0" minimum to 23' 0" maximum with mast fixed in 23' 0" long position, live mast stops in position and operative, and carrier on outriggers.
- Boom midpoint suspension pendants are required for boom lengths exceeding 140'.
- The least stable rated condition is over the side.
- Main boom length, without jib, must not exceed 190'.
- Jib must not be mounted on boom longer than 160'.
- The angles, radii, and point height "W" dimensions for combined boom and jib lengths (200' and 210') are only to be used for determining jib capacities.
- The capacities apply only to the machine as originally manufactured and normally equipped by Link-Belt Speeder.

## GENERAL INFORMATION ONLY

We are constantly improving our products and therefore reserves the right to change designs and specifications.



# Link-Belt Speeder

DIVISION OF FMC CORPORATION

Cedar Rapids, Iowa • Woodstock, Ontario, Canada • Queretaro, Mexico • Milan, Italy





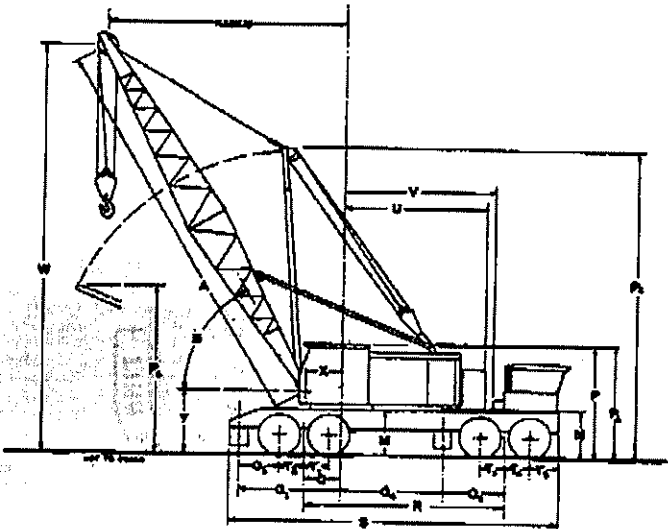


# HC-138 Truck Crane Flysheet

4-AXLE CARRIER

TRUCK MOUNTED CRANE (PCSA CLASS 12-320)

GENERAL INFORMATION ONLY



DIMENSIONS		
<b>General</b>		
Boom angle	B	
Over-all height, top of turntable bearing plate	M	4' 6"
Ground clearance under counterweight	N	4' 9"
Centerline rotation to rear axle bogie	O	4' 0"
Centerline rotation to rear outrigger center	O1	9' 9"
Center rear axle to rear outrigger center	O2	3' 7"
Pivot of bogie to front outrigger center	O3	9' 2"
Centerline rotation to front outrigger center	O4	6' 6"
Over-all cab height	P	11' 3"
Over-all height, top of gantry	P1	11' 3"
Wheel base	R	19' 8"
Over-all length with front bumper counterweight	S	32' 6"
Over-all length, front bumper counterweight removed	S	32' 2"
Center rear axle to pivot of bogie	T1 - T2	2' 3"
Center front axle to pivot of bogie	T3 - T4	2' 3"
Center front axle to front bumper	T5	3' 0"
Center front axle to front bumper counterweight	T5	3' 4"
Tailing of counterweight	U	13' 5"
Centerline rotation to back of truck cab	V	14' 5"
Minimum ground clearance		0'10"
Over-all cab width		10' 6"
Over-all width outriggers retracted		11' 0"
Over-all width outriggers extended		20' 5"
<b>Tubular Boom</b>		
Basic boom length	A	40' 0"
Over-all height boom gantry vertical	P4	30'10"
Over-all height boom gantry with boom horizontal	P5	17'10"
Over-all height at boom peak, boom in travel position (over front)		13' 1"
Radius of boom hinge pin	X	3' 2"
Height of boom hinge pin	Y	6'11"
Overall height, boom in travel position with boom gantry retracted and linked to boom		14' 7"
* Boom gantry is extended. With boom gantry retracted and boom slightly below horizontal. P1 dimension in travel clearance height.		

MAXIMUM BOOM LENGTHS MACHINE CAN HANDLE WITHOUT ASSISTANCE	
Maximum boom machine can pick clear of ground over rear and travel <sup>①</sup> .....	TUBULAR BOOM 140'
Maximum boom plus jib machine can pick up clear of ground over rear and travel <sup>①</sup> .....	120' + 20' jib
Maximum boom machine can pick clear of ground on outriggers, over side .....	160'
over rear .....	160'
Maximum boom plus jib machine can pick clear of ground on outriggers, over rear .....	160' + 50' jib
over side .....	150' + 50' jib
① Reduced travel speeds are recommended with long booms with safe speeds dependent on road conditions.	

### BRIEF SPECIFICATIONS

**CARRIER**

8 x 4: 14:00 x 20 18-ply rating tires — dual tires on rear tandem axles, single tires on front tandem axles; equalizer beam suspension front and rear; 8-wheel air brakes; power hydraulic steering; planetary rear axles; 50' 10" turning radius over corner of bumper. Standard engine — Waukesha F817G gasoline, 272 maximum brake h.p. at 2,400 r.p.m. governed load speed; 15 speeds forward and 3 reverse. Road speeds up to 41.2 m.p.h.

**LIFTING CRANE**

Approximate working weight with standard 40' "Hi-Lite" boom, boom gantry but no hook block.....99,530 lbs.  
Swing speed ..... 3.36 r.p.m.

<b>Drum</b>	<b>Line Pull</b>	<b>Line Speed</b>
14" hoist (front) .....	20,200 lbs. @	162 f.p.m.
14" hoist (rear) .....	20,200 lbs. @	162 f.p.m.

**POWER UNITS**

Suitable for operation up to 4,000 ft. above sea level. For operation at higher altitudes, consult factory.

Standard — Waukesha F554G gasoline engine with friction clutch, 6-cylinder, 109 net h.p. @ 1,710 r.p.m. full load speed.

Optional — Waukesha gasoline with hydraulic coupling or two-speed Coma; Diesel, GM4030N, Cummins H743-P175 with torque converter.



# LINK-BELT SPEEDER

DIVISION OF FMC CORPORATION

Cedar Rapids, Iowa • Woodstock, Ontario, Canada • Queretaro, Mexico • Milan, Italy

# HC-138 Maximum Capacities

(Refer to ALL notes, bottom of page)

GENERAL INFORMATION ONLY

Capacities are based on machine equipped with Boom Gantry, 8 x 4 drive Carrier — 11' 0" wide, 14:00 x 20 18-ply rating tires, Power Hydraulic Outriggers, 18,000 lbs: cwt and 4,000 lbs. Bumper cwt.

BOOM	ON OUTRIGGERS			ON TIRES	
	Length	Radius	Point Ht. W.	Rear	Side
40'	12'	78"	45' 11"	130,000*	130,000*
	13'	76"	45' 7"	128,040*	127,140*
	14'	74"	45' 4"	119,790*	119,080*
	15'	73"	45' 0"	112,500*	111,960*
	20'	65"	43' 1"	86,000*	85,930*
	25'	57"	40' 3"	67,530*	66,680*
50'	13'	79"	55' 11"	127,360*	127,110*
	14'	78"	55' 8"	119,760*	119,050*
	15'	76"	55' 5"	112,480*	111,930*
	20'	70"	53' 11"	85,980*	85,900*
	25'	64"	51' 10"	67,600*	66,900*
	30'	58"	48' 11"	54,490*	49,560*
60'	15'	79"	65' 10"	112,070*	112,070*
	20'	74"	64' 5"	86,080*	85,990*
	25'	69"	62' 8"	67,770*	67,420*
	30'	63"	60' 6"	54,670*	49,800*
	35'	58"	57' 8"	45,150*	39,270*
	40'	52"	54' 2"	38,370*	32,160*
70'	20'	76"	74' 10"	85,730*	85,840*
	25'	72"	73' 4"	67,680*	67,530*
	30'	68"	71' 6"	54,600*	49,930*
	35'	63"	69' 2"	45,080*	39,300*
	40'	58"	66' 5"	38,190*	32,170*
	45'	48"	58' 11"	28,380*	23,220*
80'	25'	78"	85' 0"	85,750*	85,660*
	30'	74"	83' 10"	67,560*	67,560*
	35'	70"	82' 2"	54,500*	49,940*
	40'	65"	80' 2"	44,980*	39,280*
	45'	61"	77' 11"	38,090*	32,140*
	50'	54"	71' 10"	28,090*	23,170*
90'	25'	79"	95' 4"	81,510*	81,510*
	30'	76"	94' 2"	67,420*	67,420*
	35'	73"	92' 8"	54,380*	49,920*
	40'	69"	91' 0"	44,840*	39,240*
	45'	66"	89' 0"	37,950*	32,080*
	50'	59"	83' 2"	28,460*	23,090*
100'	25'	77"	104' 5"	67,260*	67,260*
	30'	74"	103' 2"	54,240*	49,890*
	35'	71"	101' 7"	44,690*	39,180*
	40'	68"	99' 10"	37,790*	32,010*
	45'	62"	95' 2"	28,360*	23,000*
	50'	55"	89' 1"	21,870*	17,370*
110'	25'	79"	114' 8"	64,820*	64,820*
	30'	76"	113' 6"	54,090*	49,840*
	35'	73"	112' 1"	44,530*	39,110*
	40'	70"	110' 6"	37,630*	31,920*
	45'	65"	106' 5"	28,260*	22,890*
	50'	59"	101' 0"	21,750*	17,460*

BOOM	ON OUTRIGGERS			ON TIRES	
	Length	Radius	Point Ht. W.	Rear	Side
120'	30'	77"	123' 10"	53,930*	49,780*
	35'	75"	122' 6"	44,370*	39,020*
	40'	72"	121' 1"	37,460*	31,820*
	50'	67"	117' 4"	28,140*	22,780*
	60'	62"	112' 6"	21,620*	17,330*
	70'	56"	106' 6"	17,270*	13,680*
	80'	50"	99' 0"	14,140*	11,070*
	90'	44"	89' 8"	11,790*	9,100*
	100'	36"	77' 6"	9,960*	7,560*
	110'	27"	61' 8"	8,470*	6,320*
	120'	13"	34' 2"	7,240*	5,280*
130'	30'	78"	134' 0"	52,380*	49,720*
	35'	76"	132' 11"	44,200*	38,940*
	40'	74"	131' 6"	37,280*	31,720*
	50'	69"	128' 1"	27,960*	22,660*
	60'	64"	123' 10"	21,490*	17,200*
	70'	59"	118' 4"	17,130*	13,530*
	80'	54"	111' 8"	14,000*	10,930*
	90'	48"	103' 7"	11,450*	8,960*
	100'	42"	93' 7"	9,810*	7,420*
	110'	35"	80' 11"	8,340*	6,190*
	120'	26"	63' 10"	7,120*	5,160*
130'	13"	35' 4"	6,080*	4,290*	
140'	30'	79"	144' 2"	47,730*	47,730*
	35'	77"	143' 3"	42,500*	38,840*
	40'	75"	141' 11"	37,090*	31,610*
	50'	71"	138' 10"	27,760*	22,530*
	60'	66"	134' 10"	21,660*	17,060*
	70'	62"	129' 11"	16,980*	13,400*
	80'	57"	123' 11"	13,630*	10,780*
	90'	52"	116' 8"	11,500*	8,810*
	100'	46"	107' 11"	9,660*	7,270*
	110'	40"	97' 4"	8,190*	6,040*
	120'	33"	84' 0"	6,980*	5,020*
130'	25"	68' 1"	5,960*	4,160*	
140'	12"	36' 5"	5,070*	3,420*	
150'	35'	78"	153' 5"	39,180*	38,750*
	40'	76"	152' 4"	34,890*	31,500*
	50'	72"	149' 4"	27,320*	22,400*
	60'	68"	145' 8"	21,210*	16,920*
	70'	64"	141' 1"	16,840*	13,250*
	80'	59"	135' 8"	13,700*	10,430*
	90'	55"	127' 2"	11,350*	8,660*
	100'	50"	121' 5"	9,510*	7,120*
	110'	45"	112' 1"	8,030*	5,880*
	120'	39"	100' 11"	6,820*	4,870*
	130'	32"	86' 11"	5,770*	4,010*
140'	24"	68' 4"	4,810*	3,390*	
150'	12"	37' 6"	4,060*	2,640*	
160'	35'	79"	163' 7"	36,070*	36,070*
	40'	77"	162' 6"	31,450*	31,380*
	50'	73"	159' 10"	25,070*	22,270*
	60'	69"	156' 5"	20,110*	16,770*
	70'	65"	152' 2"	16,680*	13,100*
	80'	61"	147' 2"	12,760*	10,470*
	90'	57"	141' 2"	10,520*	8,500*
	100'	53"	134' 5"	8,660*	6,960*
	110'	48"	125' 11"	7,110*	5,720*
	120'	43"	116' 2"	5,830*	4,710*
	130'	38"	104' 5"	4,770*	3,860*
140'	31"	89' 10"	3,870*	3,130*	
150'	23"	70' 5"	3,130*	2,500*	
160'	11"	38' 6"	2,540*	1,940*	

\*These capacities are the maximum capacities, and are based on factors other than the machine's tipping condition.

## LIFTING CRANE

- Notes:
- For lifting 130,000 lbs. ten parts of 3/4" hoist rope type "N" is required.
  - Capacities shown are in pounds, and unless indicated by an asterisk (\*), are based on 85% of minimum tipping loads, with machine standing on firm level ground. Deduction must be made for weight of hook block, hook, sling, grapple, etc.
  - For boom lengths exceeding 140 feet, the boom gantry with mid-point suspension ropes is required. When boom gantry is used as a short boom, maximum lifting capacity is 18,000 lbs. from 10' 0" minimum to 23' maximum radius, with gantry extended, on outriggers side and rear.





# GENERAL INFORMATION ONLY

## HC-138 lifting crane capacities

Refer to Notes page 4

Length	Boom					On Outriggers				On Tires (Static)			
	Radius		Angle	Boom Point Height <sup>Ⓞ</sup>		Over Rear		Over Side		Over Rear		Over Side	
	Feet	Meters	Degree	Feet	Meters	Pounds	Kilograms	Pounds	Kilograms	Pounds	Kilograms	Pounds	Kilograms
150' (45.72 m)	35	10.67	77.7	153' 5"	46.77	38,600*	17,508*	38,300	17,372				
	40	12.19	75.8	152' 3"	46.41	36,800*	16,692*	31,100	14,106				
	50	15.24	71.8	149' 4"	45.53	27,400*	12,428*	21,700	9,842				
	60	18.29	67.7	145' 8"	44.40	20,800	9,434	16,300	7,393				
	70	21.34	63.5	141' 2"	43.02	16,400	7,438	12,500	5,669				
	80	24.38	59.2	135' 8"	41.36	13,100	5,942	9,800	4,445				
	90	27.43	54.6	129' 2"	39.37	10,700	4,853	7,800	3,538				
	100	30.48	49.8	121' 5"	37.01	8,800	3,991	6,200	2,812				
	110	33.53	44.6	112' 2"	34.19	7,300	3,311	5,000	2,267				
	120	36.58	38.8	100' 11"	30.77	6,000	2,721	3,900	1,769				
	130	39.62	32.3	86' 11"	26.50	5,000	2,267	3,000	1,360				
	140	42.67	24.2	68' 4"	20.82	4,100	1,859	2,300	1,043				
	150	45.72	11.8	37' 6"	11.44	3,300	1,486	1,600	725				
	160' (48.77 m)	35	10.67	78.5	163' 8"	49.88	32,700*	14,832*	32,700*	14,832*			
40		12.19	76.7	162' 7"	49.55	32,200*	14,605*	30,900	14,016				
50		15.24	73.0	159' 10"	48.72	27,200*	12,337*	21,800	9,797				
60		18.29	69.2	156' 5"	47.68	20,600	9,344	16,100	7,302				
70		21.34	65.3	152' 3"	46.40	16,200	7,348	12,300	5,579				
80		24.38	61.3	147' 2"	44.87	13,000	5,896	9,600	4,354				
90		27.43	57.1	141' 3"	43.05	10,500	4,762	7,600	3,447				
100		30.48	52.8	134' 3"	40.91	8,800	3,990	6,000	2,721				
110		33.53	48.1	128' 0"	38.40	7,100	3,220	4,800	2,177				
120		36.58	43.1	118' 2"	35.41	5,900	2,676	3,700	1,678				
130		39.62	37.6	104' 5"	31.82	4,800	2,177	2,900	1,315				
140		42.67	31.2	89' 9"	27.37	3,900	1,789	2,100	952				
150		45.72	23.4	70' 5"	21.47	3,100	1,406	1,500	680				
160		48.77	11.4	38' 7"	11.75	2,400	1,088	—	—				
170' (51.82 m)	40	12.19	77.5	172' 10"	52.88	28,100*	12,745*	28,100*	12,745*				
	50	15.24	74.0	170' 3"	51.90	24,100*	10,931*	21,400	9,706				
	60	18.29	70.5	167' 1"	50.93	20,200*	9,162*	15,900	7,212				
	70	21.34	66.9	163' 2"	49.74	16,000	7,257	12,200	5,533				
	80	24.38	63.1	158' 8"	48.31	12,800	5,806	9,500	4,309				
	90	27.43	59.3	153' 0"	46.64	10,300	4,672	7,400	3,356				
	100	30.48	55.3	146' 7"	44.68	8,400	3,810	5,900	2,676				
	110	33.53	51.1	139' 1"	42.40	6,900	3,129	4,600	2,086				
	120	36.58	46.6	130' 4"	39.73	5,700	2,585	3,500	1,587				
	130	39.62	41.7	120' 1"	36.59	4,600	2,086	2,700	1,224				
	140	42.67	36.4	107' 9"	32.84	3,700	1,678	1,900	861				
	150	45.72	30.3	92' 6"	28.21	3,000	1,360	1,300	589				
	160	48.77	22.7	72' 6"	22.09	2,300	1,043	—	—				
	170	51.82	11.1	39' 6"	12.05	1,700	771	—	—				
180' (54.86 m)	40	12.19	78.2	183' 1"	55.79	24,900*	11,294*	24,900*	11,294*				
	50	15.24	74.9	180' 8"	55.07	21,200*	9,616*	21,200*	9,616*				
	60	18.29	71.6	177' 8"	54.15	17,700*	8,028*	15,800	7,166				
	70	21.34	68.2	174' 0"	53.03	14,100*	6,395*	12,000	5,443				
	80	24.38	64.7	169' 8"	51.71	12,100*	5,488*	9,300	4,218				
	90	27.43	61.2	164' 6"	50.15	10,200	4,628	7,200	3,265				
	100	30.48	57.5	158' 7"	48.34	8,200	3,719	5,700	2,585				
	110	33.53	53.8	151' 9"	46.25	6,700	3,039	4,400	1,995				
	120	36.58	49.5	143' 10"	43.83	5,500	2,494	3,300	1,496				
	130	39.62	45.2	134' 7"	41.02	4,400	1,995	2,500	1,133				
	140	42.67	40.5	123' 10"	37.74	3,500	1,587	1,700	771				
	150	45.72	35.3	111' 0"	33.83	2,800	1,270	1,100	498				
	160	48.77	29.4	95' 2"	29.02	2,100	952	—	—				
	170	51.82	22.1	74' 5"	22.69	1,500	680	—	—				
180	54.86	10.8	40' 6"	12.34	1,000	453	—	—					
190' (57.91 m)	40	12.19	78.8	193' 3"	58.90	22,300*	10,115*	22,300*	10,115*				
	50	15.24	75.7	191' 0"	58.22	18,800*	8,527*	18,800*	8,527*				
	60	18.29	72.6	188' 2"	57.35	14,700*	6,667*	14,700*	6,667*				
	70	21.34	69.4	184' 9"	56.30	12,400*	5,624*	11,800	5,352				
	80	24.38	66.1	180' 8"	55.06	10,600*	4,808*	9,100	4,127				
	90	27.43	62.8	175' 10"	53.50	9,100*	4,127*	7,100	3,220				
	100	30.48	59.4	170' 4"	51.92	7,800*	3,538*	5,600	2,494				
	110	33.53	55.8	164' 0"	49.98	6,500	2,948	4,200	1,905				
	120	36.58	52.1	156' 8"	47.76	5,300	2,404	3,100	1,406				
	130	39.62	48.1	148' 4"	45.21	4,200	1,905	2,300	1,043				
	140	42.67	43.9	138' 8"	42.27	3,300	1,498	1,500	680				
	150	45.72	39.4	127' 5"	38.55	2,600	1,179	—	—				
	160	48.77	34.4	114' 1"	34.78	1,900	861	—	—				
	170	51.82	28.6	97' 9"	29.81	1,300	589	—	—				

Not Applicable

Ⓞ Measured vertically from center of boom head sheave to ground.

We are constantly improving our products and therefore reserve the right to change designs and specifications.

GENERAL INFORMATION ONLY



HC-138 lifting crane capacities

Notes — lifting crane capacities

- Capacities included in this chart are maximum allowable, and are based on machine standing level on firm supporting surface under ideal job conditions.
- 2. Capacities are not more than 85% of minimum tipping load.
  - a. Asterisk (\*) indicates capacities based on factors other than those which would cause a tipping condition.
- 3. Capacities are based on freely suspended loads and make no allowance for such factors as the effect of wind, sudden stopping of loads, supporting surface conditions, inflation of tires, and operating speeds. Operator must reduce load ratings to take such conditions into account. Deduction from rated capacities must be made for weight of hook block, weighted ball/hook, sling, spreader bar, or other suspended gear.
- 4. On tires (static) loads are defined as loads handled without machine travel or with machine travel at creep speeds only.
- 5. Boom point height dimensions based on machine standing on tires.
- 6. Least stable rated condition is over the side.
- 7. 54" x 44" (1.37 x 1.12 m) tubular boom with 5' hammerhead top section — for lifting 130,000# (58,967 kg) with 3/4" (19.05 mm) rope, 10-parts of 3/4" (19.05 mm) Type "N" wire rope are required.
- 8. Boom live mast must be fixed in pinned, retracted, 19' 1" (5.82 m) length for 25' (7.62 m) and 30' (9.14 m) booms, and fixed in pinned, extended 23' 0" (7.01 m) length for booms over 30' (9.14 m) long. Boom stops must be in proper working position at all times.
- 9. When using boom live mast as a short boom, maximum lifting capacity of mast is 18,000# (8,165 kg), with 3-parts of 3/4" (19.05 mm) Type "N" wire rope, from 10' (3.05 m) minimum radius to 23' (7.01 m) maximum radius. Boom live mast must be in pinned, extended 23' 0" (7.01 m) length, mast stops in proper working position, and carrier on outriggers. Note: Use of live mast as short boom is intended for machine assembly or disassembly only. It should not be used for general crane service.
- 10. Use of boom midpoint suspension pendants are required for boom lengths exceeding 140' (42.67 m).
- 11. When swinging rated load from rear to side of carrier, allowance must be made for any deflections which cause load radius to increase.
- 12. Main boom length, without jib, must not exceed 190' (57.91 m).
- 13. Jib cannot be used on main boom longer than 160' (48.77 m), and maximum jib length permitted on 160' (48.77 m) boom is 50' (15.24 m).
- 14. These capacities apply only to the machine as originally manufactured and normally equipped by FMC Corporation, Crane and Excavator Division.

**Boom** — tubular; 54" (1.37 m) wide, 44" (1.12 m) deep with 5' (1.52 m) long hammerhead top section, 1 1/4" (31.75 mm) dia. boom pendants, boom live mast, and boom midpoint suspension pendants as required.

**Jib** — tubular; 30" (.76 m) wide, 24" (.61 m) deep.

**Carrier** — FMC; 8 x 4 drive, 236" (5.99 m) wheelbase, 11' 0" (3.35 m) wide.

**Counterweights** — upper cwt. "A" — 18,000# (8,165 kg). Bumper cwt. "A" — 4,300# (1,950 kg).

Maximum boom and boom/jib machine can lift off <sup>①</sup> ground unassisted — without load.

Standard machine equipped with cwt's. above and boom live mast.	Over Rear				Over Side			
	Boom		Boom + Jib		Boom		Boom + Jib	
	Feet	Meters	Feet	Meters	Feet	Meters	Feet	Meters
<b>On outriggers —</b> With both upper cwt. and bumper cwt.	190	57.91	160 + 50	48.77 + 15.24	160	48.77	140 + 50	42.67 + 15.24
With upper cwt. and without bumper cwt.	170	51.82	150 + 50	45.72 + 15.24	160	48.77	130 + 50	39.62 + 15.24
<b>On tires <sup>②</sup> —</b> With both upper cwt. and bumper cwt.	130	39.62	110 + 50	33.53 + 15.24	100	30.48	80 + 50	24.38 + 15.24
With upper cwt. and without bumper cwt.	120	36.58	100 + 50	30.48 + 15.24	100	30.48	80 + 50	24.38 + 15.24

Maximum boom and boom/jib machine can lift off ground and travel <sup>②</sup> with, with boom horizontal — without load.

Standard machine equipped with cwt's. above and boom live mast.	On Tires Over Rear <sup>②</sup>			
	Boom		Boom + Jib	
	Feet	Meters	Feet	Meters
With both upper cwt. and bumper cwt.	120	36.58	100 + 50	30.48 + 15.24
With upper cwt. and without bumper cwt.	110	33.53	90 + 50	27.43 + 15.24

<sup>①</sup> blocks on ground and machine standing level on firm supporting surface.  
<sup>②</sup> Based on firm, level supporting surface, at speeds up to 5 m.p.h. (8.05 km/hr).

GENERAL INFORMATION ONLY



HC-138 jib capacities (representative capacities showing maximum boom and jibs permitted).

**Boom** — tubular; 54' (1.37 m) wide, 44' (11.2 m) deep with 5' (1.52 m) long hammershead top section, 1 1/4" (31.75 mm) dia. boom pendants, boom live mast, and boom midpoint suspension pendants as required.   
**Jib** — tubular; 30' (7.6 m) wide, 24' (6.1 m) deep Counterweights — Upper chwl. "A" — 18,000# (8,165 kg) Bumper chwl. "A" — 4,300# (1,950 kg).   
**Carrier** — FMC; 8 x 4 drive, 236" (5.99 m) wheelbase, 11' 0" (3.35 m) wide.

Boom Length	Jib Length	Load Radius	Jib Angle to Boom																				
			0° Offset							15° Offset							30° Offset						
			Boom Angle Degree	Point Height Feet	Jib Height Meters	Jib Capacity		Boom Angle Degree	Point Height Feet	Jib Height Meters	Jib Capacity		Boom Angle Degree	Point Height Feet	Jib Height Meters	Jib Capacity							
						Pounds	Kilograms				Pounds	Kilograms				Pounds	Kilograms	Pounds	Kilograms				
Feet	Meters	Feet	Meters	Feet	Meters	Feet	Meters	Feet	Meters	Feet	Meters	Feet	Meters	Feet	Meters	Pounds	Kilograms						
160' (48.77 m)	40	40	78.2	183' 7"	55.96	19,600	8,891	79.8	188' 2"	57.36	16,500	7,484	78.0	179' 2"	54.62	13,000	5,897	74.6	176' 2"	53.71	12,400	5,625	
			75.0	181' 2"	55.23	18,800	8,528	76.6	180' 11"	55.14	15,700	7,122	77.0	179' 2"	54.62	13,000	5,897	74.6	176' 2"	53.71	12,400	5,625	
			71.6	178' 2"	54.32	17,800	8,023	73.2	177' 11"	54.22	15,000	6,804	73.2	177' 11"	54.22	15,000	6,804	71.2	172' 6"	52.58	11,800	5,352	
			68.3	174' 7"	53.22	17,100	7,745	69.8	174' 4"	53.13	14,500	6,585	69.8	174' 4"	53.13	14,500	6,585	67.7	168' 1"	51.24	11,500	5,216	
			64.8	170' 4"	51.84	16,600	7,513	66.4	170' 0"	51.82	14,000	6,326	66.4	170' 0"	51.82	14,000	6,326	64.0	163' 0"	49.68	13,200	6,000	
			61.2	165' 2"	50.35	16,100	7,309	62.8	168' 11"	50.26	13,500	6,115	62.8	168' 11"	50.26	13,500	6,115	60.3	163' 0"	49.68	13,200	6,000	
			57.6	159' 3"	48.55	15,600	7,110	59.1	163' 0"	48.46	13,000	5,926	59.1	163' 0"	48.46	13,000	5,926	56.4	157' 0"	45.72	12,800	5,816	
			53.7	152' 6"	46.48	15,100	6,915	55.2	152' 2"	46.38	12,500	5,731	55.2	152' 2"	46.38	12,500	5,731	52.2	142' 0"	43.28	12,400	5,625	
			49.7	144' 7"	44.07	14,600	6,720	51.1	144' 2"	43.95	12,000	5,536	51.1	144' 2"	43.95	12,000	5,536	48.8	138' 10"	42.67	11,800	5,352	
			45.4	135' 5"	41.27	14,100	6,525	46.8	135' 0"	41.15	11,500	5,341	46.8	135' 0"	41.15	11,500	5,341	44.1	132' 10"	40.37	11,000	5,000	
			40.7	124' 8"	38.01	13,600	6,326	42.1	124' 4"	37.89	11,000	5,146	42.1	124' 4"	37.89	11,000	5,146	39.6	118' 10"	36.58	10,600	4,800	
			36.0	112' 4"	34.28	13,100	6,131	37.5	112' 0"	34.16	10,500	4,951	37.5	112' 0"	34.16	10,500	4,951	35.0	114' 0"	33.29	10,200	4,600	
			31.3	100' 0"	30.53	12,600	5,936	33.2	100' 0"	30.41	10,000	4,756	33.2	100' 0"	30.41	10,000	4,756	32.5	108' 0"	32.00	9,800	4,400	
			26.6	88' 0"	26.78	12,100	5,741	28.9	88' 0"	26.66	9,500	4,561	28.9	88' 0"	26.66	9,500	4,561	27.8	96' 0"	27.79	9,300	4,200	
21.9	76' 0"	21.93	11,600	5,546	24.6	76' 0"	21.81	9,000	4,366	24.6	76' 0"	21.81	9,000	4,366	23.7	84' 0"	23.90	8,800	4,000				
17.2	64' 0"	17.28	11,100	5,351	20.3	64' 0"	17.16	8,500	4,171	20.3	64' 0"	17.16	8,500	4,171	19.6	72' 0"	19.81	8,300	3,800				
12.5	52' 0"	12.53	10,600	5,156	16.0	52' 0"	12.44	8,000	3,976	16.0	52' 0"	12.44	8,000	3,976	15.3	60' 0"	15.40	7,800	3,600				
7.8	40' 0"	7.89	10,100	4,961	11.7	40' 0"	7.80	7,500	3,781	11.7	40' 0"	7.80	7,500	3,781	11.0	48' 0"	11.46	7,300	3,400				
3.1	28' 0"	3.14	9,600	4,766	7.4	28' 0"	7.35	7,000	3,586	7.4	28' 0"	7.35	7,000	3,586	7.7	36' 0"	7.42	6,800	3,200				
			9,100	4,571	3.0		2.96	6,500	3,391	3.0		2.96	6,500	3,391	3.3	24' 0"	3.09	6,300	3,000				
			8,600	4,376				6,000	3,196				5,500	3,001				5,300	2,800				
			8,100	4,181				5,500	2,996				5,000	2,801				4,800	2,600				
			7,600	3,986				5,000	2,796				4,500	2,601				4,300	2,400				
			7,100	3,791				4,500	2,596				4,000	2,401				3,800	2,200				
			6,600	3,596				4,000	2,396				3,500	2,201				3,300	2,000				
			6,100	3,401				3,500	2,196				3,000	2,001				2,800	1,800				
			5,600	3,206				3,000	1,996				2,500	1,801				2,300	1,600				
			5,100	3,011				2,500	1,796				2,000	1,601				1,800	1,400				
			4,600	2,816				2,000	1,596				1,500	1,401				1,300	1,200				
			4,100	2,621				1,500	1,396				1,000	1,201				900	900				
			3,600	2,426				1,000	1,196				500	1,001				500	500				
			3,100	2,231				500	996				0	801				0	0				

Measured vertically from ground to center of jib peak sheave — machines standing on tires.  
 Capacities over side or rear.



GENERAL INFORMATION ONLY

HC-138 boom/jib working ranges

**Boom—tubular:** 54"(1.37 m) wide, 44" (1.12 m) deep with 5'(1.52 m) long counterheadtop section, 1 1/4"(31.75 mm) dia. boom pendants, boom live mast, and boom midpoint suspension pendants as required.

**Jib—tubular:** 30"(.76 m) wide, 24" (.61 m) deep.

**Carrier—FMC:** 8 x 4 drive, 236"(5.99 m) wheelbase, 11' 0"(3.35 m) wide.

**Counterweights—** Upper ctwt. "A" — 18,000#(8,165 kg). Bumper ctwt. "A" — 4,300#(1,950 kg).

